



MFA C-267 and C-267V
 DISPOSABLE PARTICULATE RESPIRATORS
 Respiratory Mask for Protection Against
 Low Level Hazardous Solid and Water Based Aerosols
Class: FFP2

TECHNICAL DATASHEET

PRACTICAL PERFORMANCE RESULTS

The Best Economic Solution
 in Respiratory Protection

Filter penetration

| Model | Paraffin Penetration* | Limit |
|------------------|-----------------------|----------------|
| C-267 and C-267V | % 0,85 | < %6 |

* Average of Test Results of Penetration for Paraffin Oil Mist (Flow Rate % 1.6 dm³ s)

Inhalation Resistance

| Model | Inhalation Resistance* | Limit |
|------------------|------------------------|---------------------|
| C-267 and C-267V | 1,137 mbar | < 2,4mbar |

* Average of Test Results of Inhalation Resistance (Flow rate 1,6 dm³ s)

Exhalation Resistance

| Model | Exhalation Resistance* | Limit |
|--------|------------------------|-------------------|
| C-267 | 1,862 mbar | < 3mbar |
| C-267V | 1,279 mbar | < 3mbar |

* Average of Test Results of Exhalation Resistance (Flow rate 2,7 dm³ s)

Applications

| Product | EN 149:2001 +A1:2009 Classification | Maximum Workplace Exposure Limit (WEL)* |
|---------|-------------------------------------|---|
| C-267 | FFP2 NR D | 12 |
| C-267V | FFP2 NR D | 12 |

*Many countries apply Assigned Protection Factors (APFs) which reduce the maximum concentrations of particles in which these products can be used. See national regulations and EN 529:2005.

Materials

| | |
|-----------------|---|
| Straps | : Featured Latex Free Knitted Headbands |
| Nose Clip | : Steel is planting with zinc |
| Filter | : Polypropylene |
| Layers | : Polypropylene |
| Valve | : Polypropylene |
| Valve Diaphragm | : TPI |

Approval

Our disposable particulate respirators has been tested and certificated by the BSI, Notified Body of the European Community (Number 2797). The filtering half masks produced true the relevant EU regulation EU 2016/425, standards from EN 149: 2001 + A1: 2009 FFP2 NR D and CE marked.

Designations:

NR = Non Reusable (Single Shift Use Only)

D = Meets The Clogging Resistance Requirements

Certificates

CE EN 149:2001+A1:2009 NR D
 ISO 9001:2008 Quality Management System
 ISO 13485: 2003 Medical Devices Quality Management System

EAC TP 019/2011 UkrSEPRO

MFA C-267 and C-267V
DISPOSIBLE PARTICULATE RESPIRATORS
Respiratory Mask for Protection Against
Low Level Hazardous Solid and Water Based Aerosols
Class: FFP2



THIN and POWERFUL STRUCTURE DIFFERENT FROM THE COMPETITORS

These respirators are designed for optimum comfort, convenience and fit. Collapse resistant thin and strong shell gives the user maximum comfort while filtering more than the EN standard required. Secretly assembled nose wires are providing better usage. The well design and soft inner surface results in greater comfort leading to greater wearer acceptance. Folds easily for storage and reuse. Individually wrapped allowing convenient and clean storage prior to use. Nose clip - adjusts to most face shapes and sizes. Easy to use - lightweight, single piece, easy fit design. Unrestricted vision - ow profile allows for wearing with glasses or safety goggles.



Specially positioned nose clip does not pose any rupturing or dislocation risk or related injury risk. It maintains its features even after repeated usage.

Its special thermal bonding layer gives it a reinforced body that is resistant to deformation, perspiration-related problems and collapse.

The balance between the flexibility and pressure of the featured knitted headbands makes for increased comfort. They also will not lose flexibility or pressure in hot or cold working conditions.

The set created in the inner mechanism of the exhalation valve prevents possible problems of moisture and dust accumulation. It works very efficiently thanks to its oval structure and the angle of seal. It provides coolness and comfort.

It is suitable for use with the other Personal Protective Equipment such as helmets, safety glasses and ear protection.

* Passed dolomite dust test. It provides protection for minimum 8 hours

WHAT IS DOLOMITE DUST TEST?

This is an optional performance test defined in EN 149: 2001+A1:2009 standard. It demonstrates that the mask provides efficient protection for minimum 8 hours. The masks passing this test bear "D" marking (e.g. FFP2 D). Choose the masks with "D" marking while purchasing them and make sure that your mask can be used safely for minimum 8 hours.

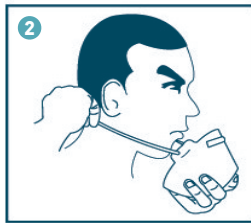
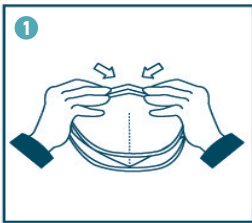


MFA C-267 and C-267V
DISPOSIBLE PARTICULATE RESPIRATORS
Respiratory Mask for Protection Against
Low Level Hazardous Solid and Water Based Aerosols
Class: FFP2

TECHNICAL DATASHEET

Fitting Instructions

Before fitting the respirator, ensure hands are clean. With reverse side up and using the tab, separate top and



1. Hold the respirator in hand with the nose-piece at your fingertips. Allow headbands to hang freely below hand.
2. Cup the respirator firmly against your face with the nosepiece on the bridge of your nose.
3. Stretch and pull the lower headband over the head and position below your ears. Stretch and pull the top headband on the back of your head above your ears
4. Press soft nosepiece to conform snugly around the nose.
5. To test fit for respirator without exhalation valve: cup both hands over the respirator and inhale sharply. A negative pressure should be felt inside respirator. If air flows around your nose, tighten the nosepiece. If air leaks around the edges, reposition the headband for better fit.

IMPORTANT: It is highly important to train the users for correct use of the product. When it become difficult to breath or the mask is damaged or deformed, or it does not fit the face, the mask should be immediately replaced. The instructions should be carefully followed as an important step in safe use of the mask.

CONTROLS BEFORE USAGE

- Before use, read the instructions carefully
- Check the date of the end of shelf life
- Check the suitability of the mask to the area where used, looking at the signs on the mask.
- Check the head bandages of the mask.
- Check the nose clips of the mask.
- Check the mask if there is a damage or not before use.

Fit Check

Cover the front of the respirator with both hands being careful not to disturb its fit.

(a) UNVALVED respirator - EXHALE sharply

(b) VALVED respirator - INHALE sharply.

If air leaks around the nose, re-adjust the nose clip to eliminate leakage. Repeat the above fit check. If air leaks at the respirator edges, work the straps back along the sides of the head to eliminate leakage. Repeat the above fit check. If you CANNOT achieve a proper fit DO NOT enter the hazardous area. See your supervisor. Users should be fit tested in accordance with national requirements.



MFA C-267 and C-267V
DISPOSIBLE PARTICULATE RESPIRATORS
 Respiratory Mask for Protection Against
 Low Level Hazardous Solid and Water Based Aerosols
Class: FFP2

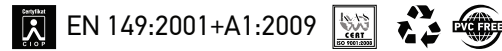
TECHNICAL DATASHEET

Warning and Use Limitations

1. Failure to follow all instructions and limitations on the use of this product could reduce the effectiveness of respirator and result in sickness or death.
2. A properly selected respirator is essential to protect your health. Before using this respirator, consult an Industrial Hygienist or Occupational Safety Professional to determine the suitability for your intended use.
3. This product does not supply oxygen. Use only in adequately ventilated areas containing sufficient oxygen to support life. Do not use this respirator when oxygen concentration is less than 19%.
4. Do not use when concentrations of contaminants are immediately dangerous to health or life.
5. Do not use explosive atmospheres.
6. Leave work area immediately and return to fresh air if (a) breathing becomes difficult, or (b) dizziness or other distress occurs.
7. Facial hairs or beards and certain facial characteristics may reduce the effectiveness of this respirator.
8. Never alter or modify this respirator in any way.
9. NR - Only for single use. No maintenance necessary. Discard the used respirator after single use.
10. Keep respirators in the display box away from direct sunlight until use.

MARKING:

MFA C-267 and MFA C-267V FFP2 NR D 2797



TP 019/2011

STORAGE

- Must be kept in their original package.
- In the storage area, temperature must be between - 20 °C / + 40 °C
- Moist must not be more than % 80.
- If kept under these conditions, shelf life is 5 years.

PACKAGING DETAILS

ECO PACKING

| Model | Pcs in Box | Pcs in Carton | Carton Size | Carton Weight |
|--------|------------|---------------|-------------|---------------|
| C-267 | 20 | 1.000 | 55x55x35 cm | Ask MFA |
| C-267V | 15 | 750 | 55x55x35 cm | Ask MFA |

SPEC. PACKING

| Model | Pcs in Box | Pcs in Carton | Carton Size | Carton Weight |
|--------|------------|---------------|-------------|---------------|
| C-267 | 100 | 800 | 55x55x35 cm | Ask MFA |
| C-267V | 60 | 480 | 55x55x35 cm | Ask MFA |

SYMBOLS AND PICTOGRAMS

| | | |
|-------------------|---------------------------|-----------------------------------|
| End of Shelf Life | Storage Temperature Range | Storage Maximum Relative Humidity |
|-------------------|---------------------------|-----------------------------------|

| | |
|-----------------------|---------|
| Read User Information | Caution |
|-----------------------|---------|